



SASQUATCH™ INSTALLATION GUIDE

Sasquatch™ is the newest breakthrough innovation from E-Z Gutter Guard and Midwest Enterprises. Constructed with solid, perforated, black painted, .019” high-strength aluminum, Sasquatch is hangerless, continuous gutter protection. It won't rust, buckle, or warp under the weight of snow, ice, or ladders. Sasquatch carries a limited lifetime, transferrable warranty.

Sasquatch is installed on the ground and WITH the gutter, locking securely into the front hem and fastened through a patent-pending rear screw ledge that allows screws to be pre-started on the ground, locking Sasquatch to the gutter, and making for easy and direct fascia attachment. The result is unmatched strength, durability, and ease of installation.

SAFETY TIPS

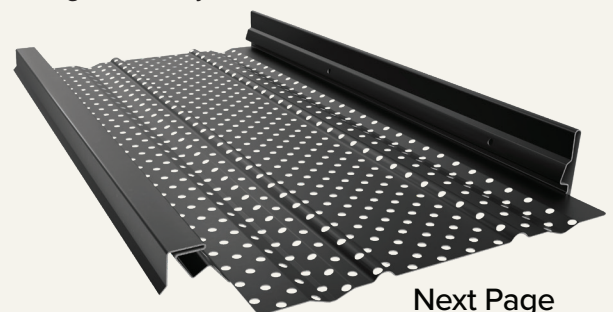
To safely quote a job, it is rarely necessary to climb onto the roof. E-Z Gutter Guard Protection is easy to estimate from the ground. A simple line drawing usually is sufficient.

While working with this product, it is very important to be safety conscious and always wear eye protection and gloves. Try to make all cuts and trims from the ground, climbing the ladder only for measuring and installing.

Following proper ladder safety requirements is critical to completing a job safely. For complete guidelines on job-site ladder safety, we recommend following standards set forth by the United States Occupational Safety and Health Administration (OSHA). Visit www.osha.gov to learn more.

KEY INFORMATION BEFORE YOU BEGIN:

1. Sasquatch is installed at ground level, before the gutter is installed on the home.
2. Available only in black, Sasquatch is hangerless, so there is no need for any hangers or clips.
3. All screws for standard installation are included with Sasquatch, Sasquatch Arctic Extreme, Sasquatch Fine Debris Filter, Sasquatch Access Panels, and Sasquatch Pre-Cut Mitered Corners. For added strength, additional screws may be needed, however, are not included.
4. It is helpful to maintain a supply of additional screws should you choose any of the optional installation methods as outlined later in this guide. These screws are available from Midwest Enterprises.
 - To secure Sasquatch to the gutter and fascia, Midwest Enterprises recommends: 1-1/2” screws, stainless steel capped 1/4” hex washer head with Hi-Lo threads, 15 threads/in, diameter .190” in with T-17 point.
 - To connect Sasquatch panels together or for access panel attachment: Black stainless steel #6-3/8” rapid piercing screws.
 - To fasten the Fine Debris Filter: Mill Finish Stainless Steel #8-1/2” rapid piercing screws.
5. For optimal results, make sure your gutter machine is properly calibrated to original factory specifications. Any deviation could cause inconsistent installation issues.
6. Each Sasquatch panel is 7.5' long. On the right side of each panel there are cutouts notched on the end. This allows for the next piece of Sasquatch to overlap the notch at which point the two pieces will be secured using a (supplied) black, 3/8” screw.
7. Always use a chop saw to cut Sasquatch to length, use a metal blade, and cut SLOWLY.



Next Page

GROUND INSTALLATION

1. Run your gutter to length and install the outlets and endcaps. Caulk seams accordingly.
2. With the gutter on stands, start on the left front of the gutter, and hold Sasquatch vertically by the rear of the cover against the left endcap.
3. Insert the front of the cover into the front of the gutter under the hem, applying slight pressure.
4. Rotate the cover into the hem of the gutter. The design of Sasquatch forces the finger up to lock into the hem of the gutter.
5. From right to left, press the rear of Sasquatch over the back of the gutter.
6. Install your next piece of Sasquatch as outlined above, and continue doing so until you reach the end of the gutter.
 - a. It is important to note that the right side of each piece of Sasquatch has notches cut out so the subsequent piece can overlap it. When you rotate Sasquatch into the gutter slide it over the notch until the two sections touch. Then press Sasquatch over the back of the gutter. Once you overlap the two pieces, insert one (supplied) black 3/8" screw to connect the two pieces.
 - b. **It is critical that there are NO GAPS when bringing the two pieces together. They must be snug to avoid potential leaks.**
7. When you reach the end of the gutter, measure from the front lip of the last full section of Sasquatch to the endcap, then carefully measure the section from left to right and cut off the notched end on the right side.
 - a. **It is critical to ensure the trimmed section is tight against the endcap to avoid any potential leaks.**



Securing Sasquatch to the Gutter

1. Now that you have completed the first step of installation, it is now time to secure Sasquatch to the gutter.
2. Use the (supplied) 1-1/2" screws and insert into the holes on the rear screw ledge of Sasquatch. Partially drive these screws into every third hole and just enough to engage Sasquatch to the rear of the gutter, without fully penetrating.
 - a. **Do not screw completely through the gutter to avoid scratching the fascia during installation.**
3. **IMPORTANT NOTE:** Driving screws into every third hole is the minimum requirement for installing Sasquatch. For situations or in areas where there is heavy snow, debris, or ice load, it is recommended to install 1-1/2" screws in every hole or every other hole of the rear hem. In addition, you have the option to fasten Sasquatch through the top of the gutter hem for extra strength, using 3/8" screws. For extreme situations, Sasquatch Arctic Extreme is also available, constructed using .022" heavy-duty aluminum.



Installing Access Panels

1. As you are installing Sasquatch onto a gutter and you are approaching an outlet hole, you will need to use the Sasquatch Access Panel to allow for easy access for maintenance in that area.
2. Stop the Sasquatch panel approximately five inches from the center of the outlet hole.
3. Trim off the notched overlap edge on the right side of the Sasquatch panel, leaving a full straight edge.
4. The Sasquatch Access Panel is 14" in length and you will want it to overlap the Sasquatch panel while leaving a clear 8"-10" opening centered over the outlet.
5. If your outlet is near the end of the gutter, simply trim the Access Panel to length, making sure it fits snugly against the end cap to avoid potential leaks.
6. Should the Access Panel not reach the end cap, simply continue installing a Sasquatch panel until you reach the end of the gutter. The Access Panel **MUST** overlap the Sasquatch panel for the continued run, however, leave a solid 8-10" opening over the outlet.
 - a. **Important note:** If the last section of Sasquatch Gutter Protection is less than 1', use at least two 1-1/2" screws to fasten Sasquatch through the back of the gutter and into the fascia. If there is only one hole on the remaining length of Sasquatch, add a second hole.
7. Wherever the Access Panel overlaps Sasquatch, be sure to attach them together with (supplied) black, 3/8" screws—two on each side.
8. Since the Access Panel lays on top of the gutter hem, fasten it to the gutter with the (supplied) black, 3/8" screws. In addition, attach the Access Panel through the gutter, and into the fascia, using two (supplied) 1-1/2" screws.



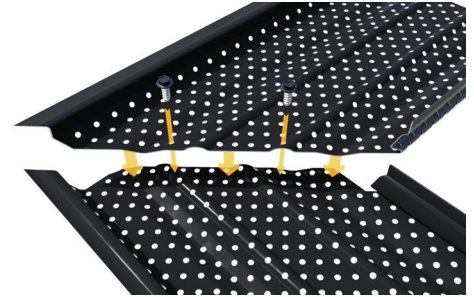
INSTALLING YOUR GUTTER

1. With Sasquatch installed, it is now time to install the gutter system.
2. Install the gutter with normal fall (slope) methods, using the pre-installed 1-1/2" screws to tack the gutter to the fascia. After the correct slope of the gutter is determined, finish installing the remaining pre-installed screws.
 - a. **Reminder:** For typical load applications, one 1-1/2" screw every third hole will provide a strong and durable installation. For heavier load situations, such as ice and heavy snow, it is recommended to fasten additional 1-1/2" screws (not supplied) through the rear screw ledge of Sasquatch, directly into the fascia.

OTHER INSTALLATION METHODS

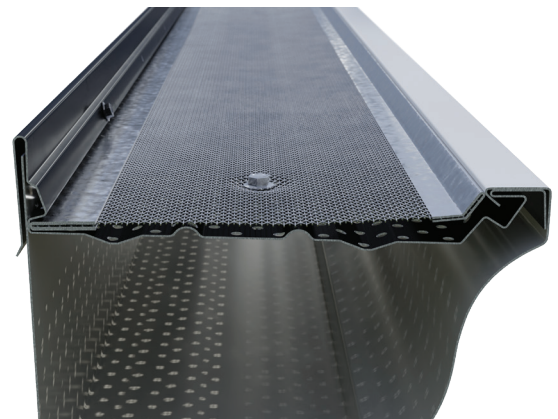
Mitered Corners

1. When installing mitered corners, you have two options: cut them yourself using Sasquatch Access Panels, or with Sasquatch Pre-Cut Mitered Corners.
2. Use your standard method for cutting gutter miters – stop your Sasquatch panel between 6”-12” from the fascia corner.
3. Fasten the gutter and Sasquatch panel with (supplied) 1-1/2” screws to the fascia.
4. Screw the gutter miter together and caulk.
5. Using Pre-Cut Mitered Corners:
 - a. Take one side of the Mitered Corner and trim a 1” notch to the front and back vertical walls as shown in the photo.
 - b. Align the lap Mitered Corner into place then drive two (supplied) black 3/8” screws into the Sasquatch panel.
 - c. Secure the Mitered Corner to the top hem of the gutter using (supplied) black 3/8” screws.
 - d. Install the other half of the Mitered Corner piece using the same method as outlined above. This piece will overlap the lap of the already-installed Mitered Corner. Drive two (supplied) black, 3/8” screws where the two corners overlap. Use black caulk to fill any small openings.
 - e. Fasten (supplied), 1-1/2” screws through both the Mitered Corner and gutter into the fascia.
6. NOT using Pre-Cut Mitered Corners:
 - a. Using Sasquatch Access Panels, cut 45-degree angles for each miter.
 - b. Take one side of the mitered corner and trim a 1” notch to the front and back vertical walls as shown in the photo.
 - c. Align the lap mitered corner into place then drive two (supplied) black 3/8” screws into the Sasquatch panel.
 - d. Secure the mitered corner to the top hem of the gutter using (supplied) black 3/8” screws.
 - e. Install the other half of the mitered corner piece using the same method as outlined above. This piece will overlap the lap of the already-installed mitered corner. Drive two (supplied) black 3/8” screws where the two corners overlap. Use black caulk to fill any small openings.
 - f. Fasten (supplied) 1-1/2” screws through both the mitered corner and gutter into the fascia.



Fine Debris Filter

1. In areas where fine debris, such as pine needles, is prevalent, it is recommended that the Sasquatch Fine Debris Filter be used in addition to Sasquatch.
2. Installation is very easy.
3. Once Sasquatch has been installed on a gutter, however, prior to fascia attachment, the Fine Debris Filter will simply be inserted on top and fastened to Sasquatch.
 - a. Insert the straight edge of the Fine Debris Filter into the back receiving groove under the screw ledge and fasten with (supplied), mill finish 1/2” stainless steel screws through the screen into the Sasquatch panel at the front bead. This will allow you to maintain a gap under the Filter.



E-Z-GUTTER GUARD SYSTEMS

by Midwest Enterprises
1 Wagner Drive, Saint Clair, MO 63077
636-629-6484 | 800-748-7736

For product and sales information:
info@e-zgutter.com

MADE IN USA | Patent Pending



FOLLOW US ON
  
Next Page